



# EM1000™ ESWL SYSTEM

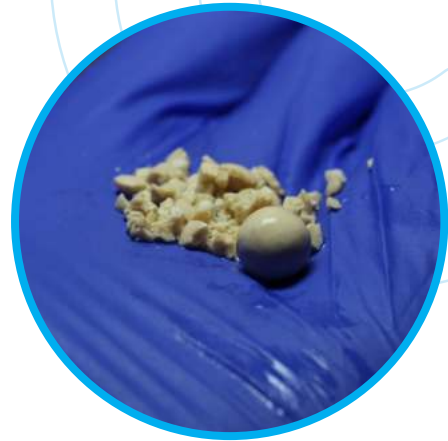
THE **IDEAL** LITHOTRIPSY SYSTEM  
FOR STONE MANAGEMENT



# HIGH STONE-FREE RATE

## BACKED BY CLINICAL PROOF

- EM1000™ offers customization for each patient, ideal for lithotripsy and endo-urology
- Fast, effective results
- Low adverse event rate
- Leading the field with clinical evidence



## BUSINESS ADVANTAGES

- Modular, compact systems
- Mobile, portable option
- Revenue driver
- Limited investment

## PATIENT ADVANTAGES

- Easy, non-invasive procedure
- Hospitalization is not mandatory
- Low retreatment rate



*As a urologist working in a high stone burden area, I found this machine very helpful in treating hundreds of patients with renal and uterine stones using only light sedation and at **outpatient** level. I found this particular machine preferable as it is less noisy, very portable, and **compact** in addition to its **efficiency** and high **patient satisfaction**.*



Dr. Gidena Ghiwot, MD, Assistant Professor of Urology,  
Head of Urology, Ayder Comprehensive Specialized Hospital

# UNIQUE FEATURES

## ROTATING HEAD

180° rotating head to enable treatment from the back or from the side of the abdomen, thus guaranteeing excellent results.



## EASY COUPLING

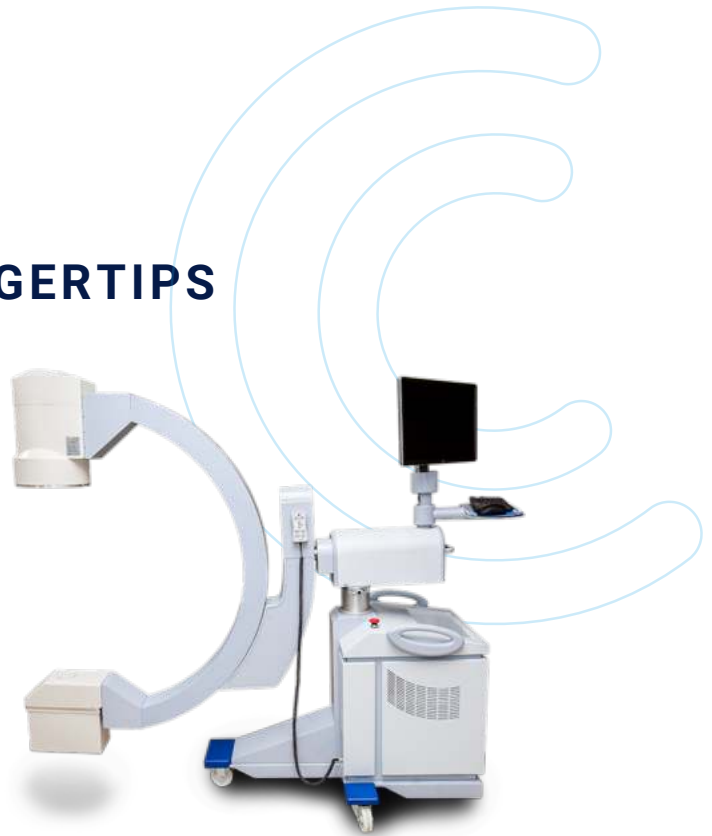
- Easy positioning of the patient and localizing of the stone within the treatment area
- Adjustable membrane for patient coupling
- Optimal coupling pressure and wide entrance angle



# VISIONSPEC™

## IMAGING AT YOUR FINGERTIPS

- Uninterrupted surgical workflow
- Connected to DICOM network interface
- Combined image intensifier, monoblock, remote control, C-arm
- Integrated patient data management capabilities



## NEW FLAT PANEL TECHNOLOGY

### SEE BETTER. TREAT BETTER.

- Optimal workflow for urology, orthopedics, and general surgery procedures
- Minimal radiation dose per session
- Fast stone identification & diagnosis

### HIGH IMAGE QUALITY

- Wide dynamic range with enhanced contrast and depth
- High visibility with low noise
- Low distortion and no aberrations

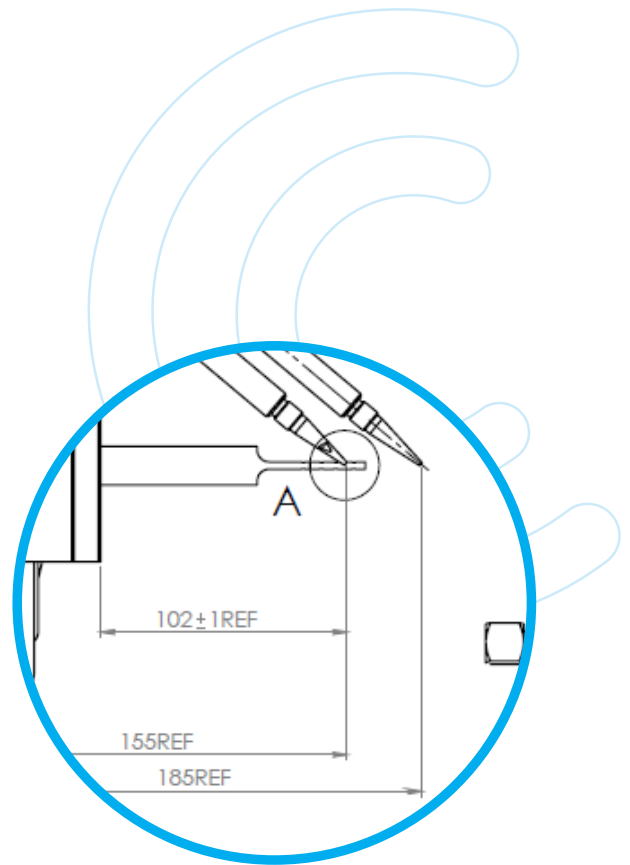


Visionspec™ with  
Flat Panel Detector

# MAX-FOCAL™

## TREAT ANY SIZE PATIENT

- Enable treatment options for obese patients as well as any other size patient
- Make custom adjustments to direct the focal point and healing zone
- Extend penetration depth up to 185 mm



# ENDO COMFORT™ TREATMENT TABLE

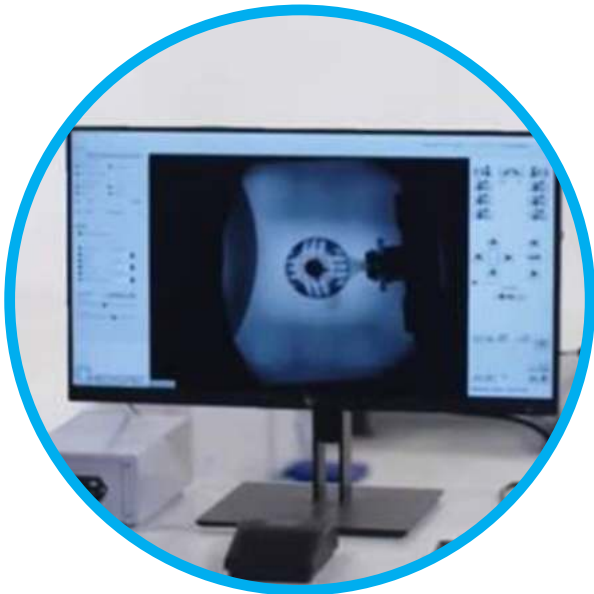
## #1 IN VERSATILITY FOR ENDOUROLOGY AND UROLOGY PROCEDURES

- Multi-directional movements, 3-axis, 4-axis, and 5-axis options, allow accurate positioning of the patient & stone(s), resulting in high comfort & efficacy
- Comfortable, fast, and efficient for different medical applications
- Carbon-fiber material allows visibility for x-ray
- Mobile and stationary options available



# MEDICONSOLE™

## ADVANCED TREATMENT CONSOLE



- Enables automatic stone localization
- Supports a remote system to control treatment table movements, X-ray arm movements, lithotripter
- Allows remote procedure control and thus **zero exposure to X-ray**

## COMPUTERIZED STONE MANAGEMENT

- Digital storage and sharing capabilities – Fully-equipped to store and send x-ray, ultrasound, and endoscopic imaging
- Compatible with any ultrasound machine
- Flexible to combine standard x-ray equipment with Mediconsole™



# ULTRASOUND INTEGRATION

## FLEXIBILITY FOR ADVANCED IMAGING

- Enables **real-time online viewing** throughout the procedure
- Works with any standard ultrasound systems on the market
- Rotates 360-degrees for excellent clinical results



## BUILT-IN EFFICIENCY

- **Reduce treatment time** by minimizing shocks per treatment
- Capacity for simultaneous x-ray and ultrasound imaging
- Detachable ultrasound probe allows the same ultrasound unit to be used for non-lithotripsy purposes





# WORLD CLASS MEDICAL INNOVATION

## THE EM1000 SYSTEM, DEVELOPED & MANUFACTURED BY MEDISPEC

Since its founding 30 years ago, Medispec has been a leader of shockwave therapy technologies, initiating new treatments and applications across medical disciplines, providing health and economic benefits to both providers and their patients.



LIVE BETTER. LOVE BETTER.



203 Perry Parkway, Suite #6,  
Gaithersburg, MD 20877, USA  
Tel: +1 (301) 944-1575  
Fax: +1 (301) 972-6098  
E-mail: [marketing@medispec.com](mailto:marketing@medispec.com)  
[www.medispec.com](http://www.medispec.com)

